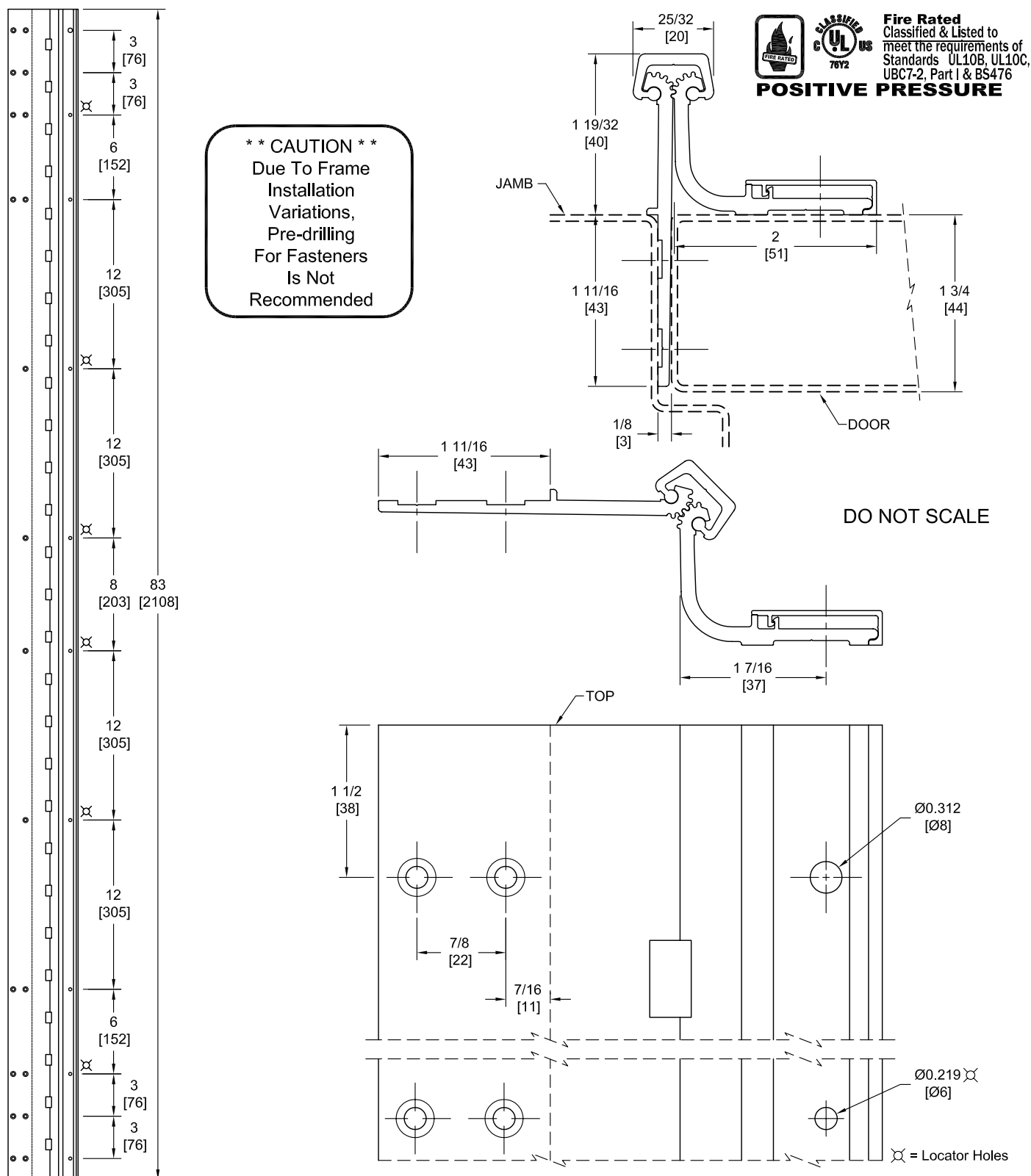


Effective Date: March 2004

Effective Date: March 2004  
**WTHS83HD**

## TEMPLATE HALF SURFACE CONTINUOUS GEARED ALUMINUM HINGE



PEMKO Template Full Surface Continuous Geared Aluminum Hinges CWTHS83HD/DWTHS83HD are made to conform to this drawing.  
Machine Screw Size - Jamb Leaf - No. 12-24 x 7/16 FHUC Thread-forming.

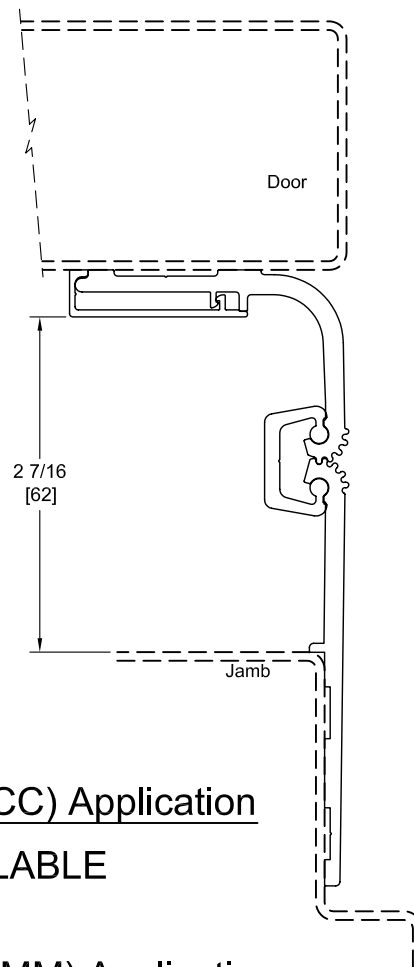
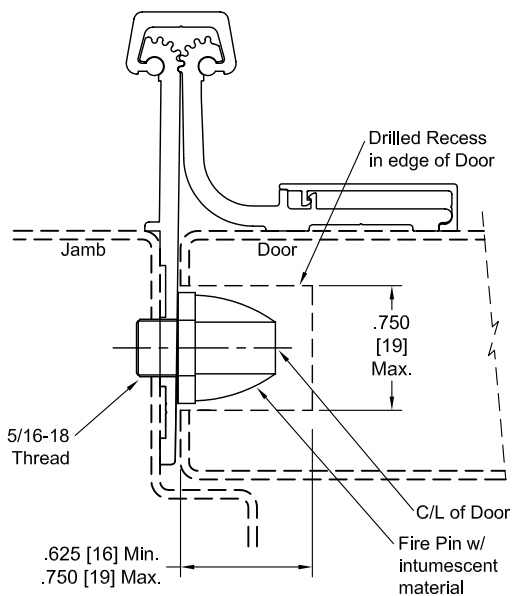
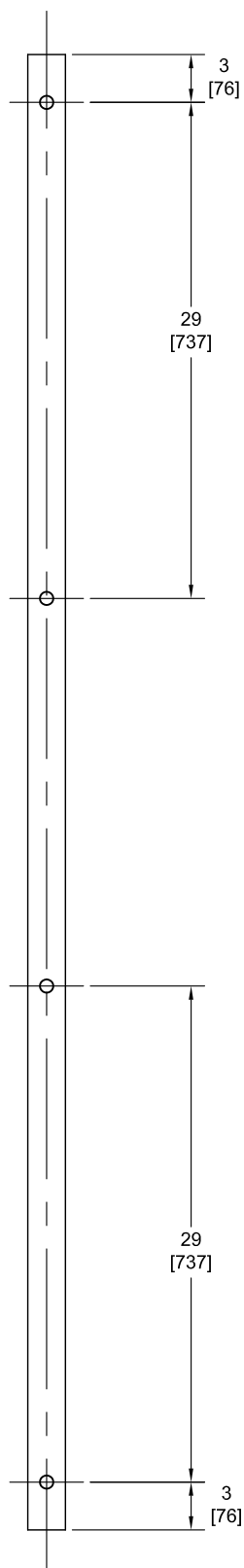
- Door Leaf - No. 12-24 x 3/4 Pan Head Self-drilling.
- No. 10 x 1-1/2 Truss Head SMS.
- No. 1/4-20 x 1 PCH Shoulder Screws w/ No. 1/4-20 x 1 5/8 Thru Bolts.

PEMKO Continuous Geared Aluminum Hinges are Listed for fire applications up to 90 minutes without special preparation; for 3 hour openings using hollow metal doors and hollow metal frames on Masonry/Drywall, Fire Pins (supplied separately) must be used. See back for locations.

Manufacturer reserves the right to make changes without formal notice.

Continued on Back...

# Fire Pin Application



## Concealed Circuit (CC) Application

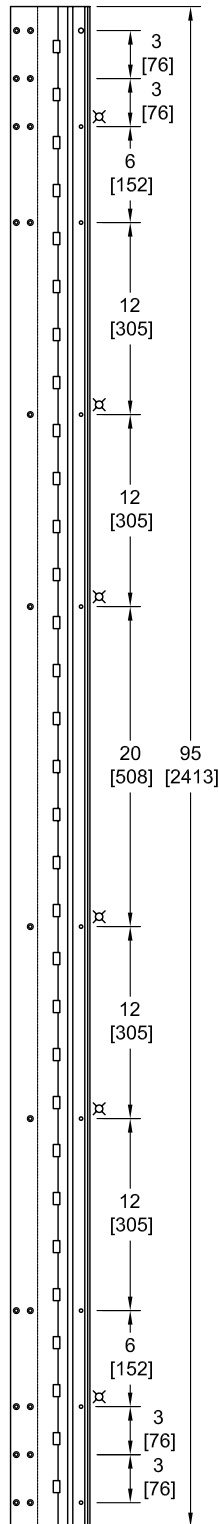
NOT AVAILABLE

## Magnetic Monitor (MM) Application

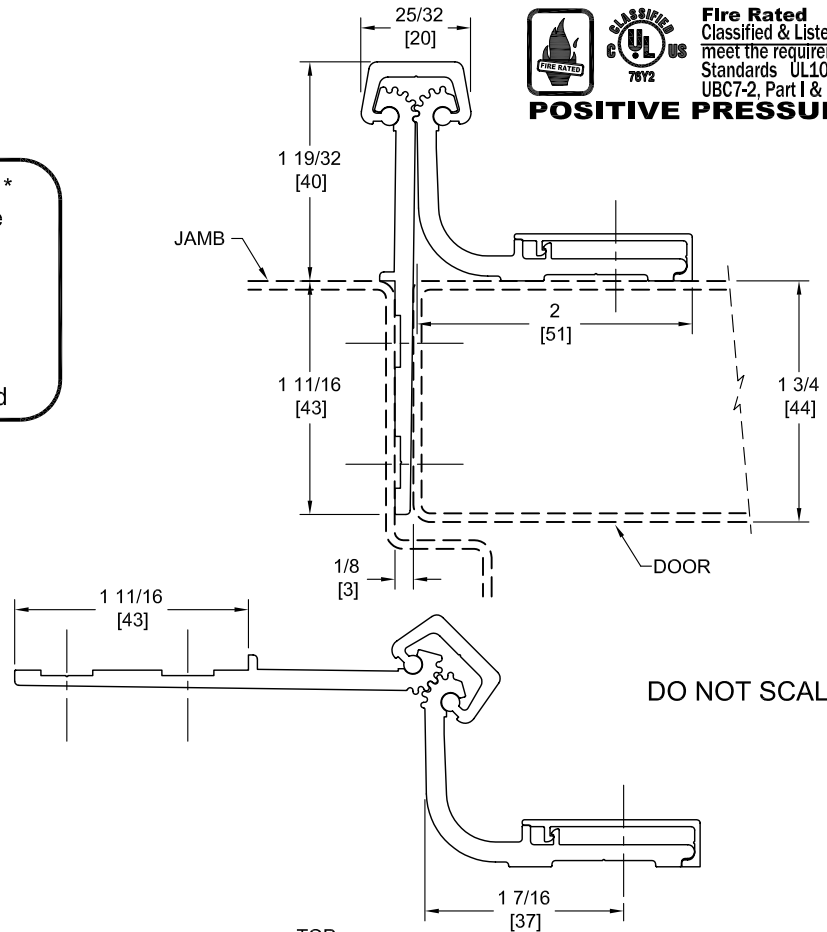
SEE ELECTRICAL APPLICATION SECTION  
IN TECHNICAL MANUAL

# WTHS95HD

## TEMPLATE HALF SURFACE CONTINUOUS GEARED ALUMINUM HINGE



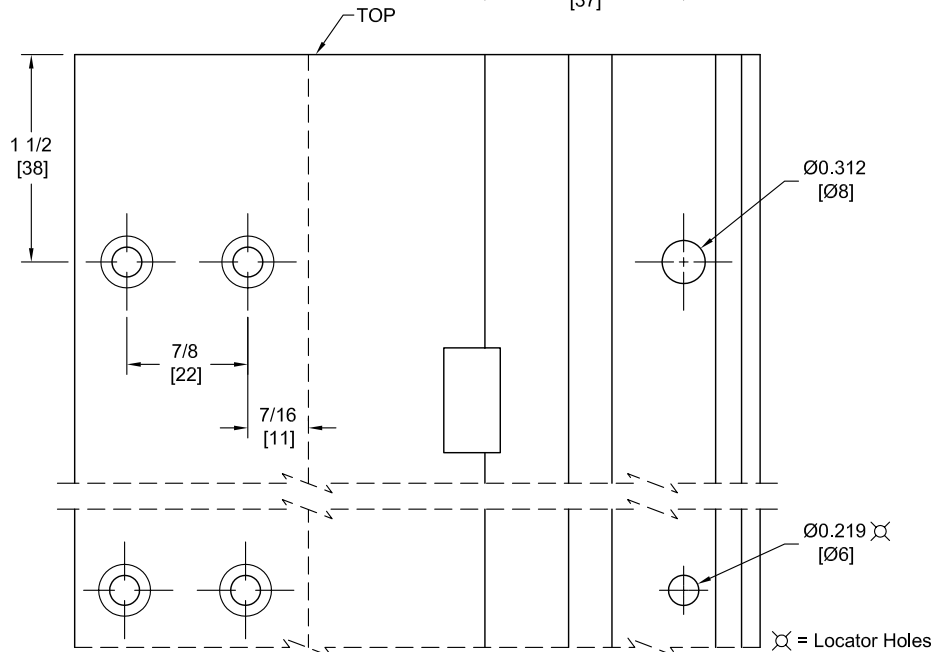
**\*\* CAUTION \*\***  
Due To Frame  
Installation  
Variations,  
Pre-drilling  
For Fasteners  
Is Not  
Recommended



**Fire Rated**  
Classified & Listed to  
meet the requirements of  
Standards UL10B, UL10C,  
UBC7-2, Part I & BS476

**POSITIVE PRESSURE**

DO NOT SCALE



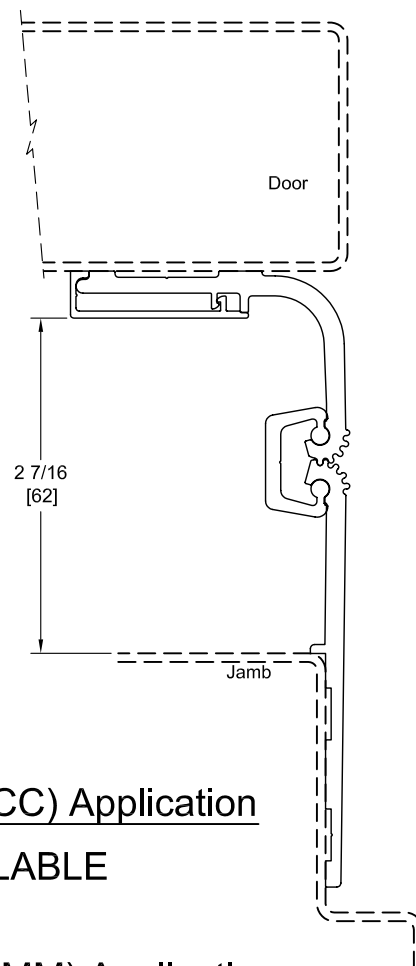
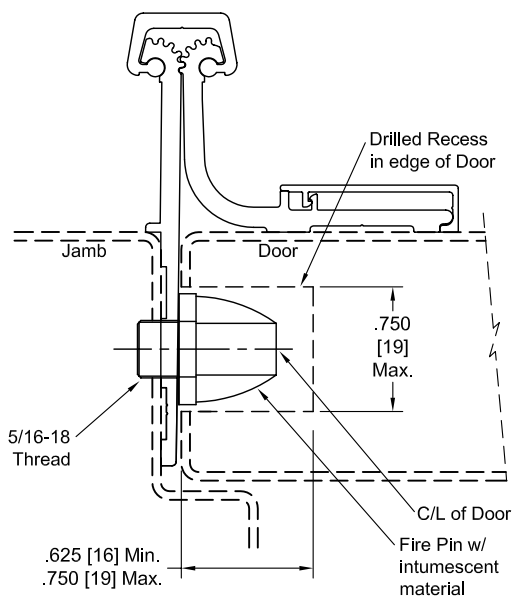
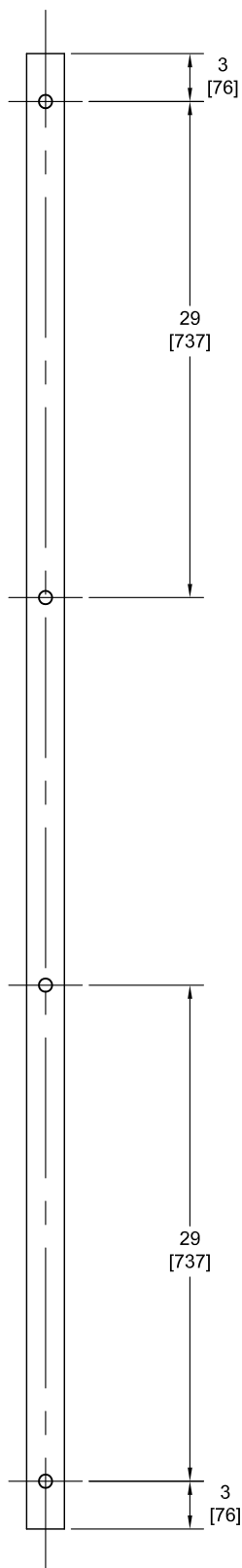
PEMKO Template Full Surface Continuous Geared Aluminum Hinges CWTHS95HD/DWTHS95HD are made to conform to this drawing.  
Machine Screw Size - Jamb Leaf - No. 12-24 x 7/16 FHUC Thread-forming.

- Door Leaf - No. 12-24 x 3/4 Pan Head Self-drilling.
- No. 10 x 1-1/2 Truss Head SMS.
- No. 1/4-20 x 1 PCH Shoulder Screws w/ No. 1/4-20 x 1 5/8 Thru Bolts.

PEMKO Continuous Geared Aluminum Hinges are Listed for fire applications up to 90 minutes without special preparation; for 3 hour openings using hollow metal doors and hollow metal frames on Masonry/Drywall, Fire Pins (supplied separately) must be used. See back for locations.

Manufacturer reserves the right to make changes without formal notice.

# Fire Pin Application



## Concealed Circuit (CC) Application

NOT AVAILABLE

## Magnetic Monitor (MM) Application

SEE ELECTRICAL APPLICATION SECTION  
IN TECHNICAL MANUAL